

VIRTUAL HEALTH EQUITY SUMMIT

MONDAY, JUNE 7 – THURSDAY, JUNE 10, 2021

healthequitysummit.com

AGENDA-AT-A-GLANCE All times listed are EDT.

DAY I: MONDAY, JUNE 7, 2021

10-11 am **MINI SUMMITS ROUND I (Concurrent Sessions)**

1. Embedding Health Equity in Patient Safety and Clinical Quality Initiatives	2. Part I: Barriers to Care for LGBTQ Communities	3. Combating Anti-Asian Sentiment & Migrant Mental Health Services	4. Declaring Racism a Public Health Crisis	5. Social Determinants of Health for Native Americans	6. Big Data and Health Equity & Perinatal Equity	7. Standardizing Health Equity Competencies across Health Professions Training Programs	8. Advancing Health Equity in Health Services Research
---	---	--	--	---	--	---	--

11:15 am-12:15 pm **MINI SUMMITS ROUND II (Concurrent Sessions)**

9. Implementing Supply Chain Strategies to Address Health Equities	10. Part II: Barriers to Care for LGBTQ Communities	11. Community Health Needs Assessment (CHNA) to Strengthen Health Equity	12. Domestic Violence & Health Equity, COVID-19 and Homelessness	13. Meet the VCs Funding “Health Equity” Startups	14. Will Alternative Payment Models Reduce or Exacerbate Inequities	15. Advancing Health Equity in Scholarly Publishing	16. Preventing Health Equity Leaders from Becoming Collateral Damage
--	---	--	--	---	---	---	--

1-5:15 pm **OPENING PLENARY SESSION:**

- Co-chair Introductions; Foundation Welcome
- Keynote by Camara Phyllis Jones, MD, MPH, PhD
- A History of Xenophobia in the US by Erika Lee, PhD
- Health Equity: From Understanding to Solutions by Lisa A. Cooper, MD, MPH
- CMMI Keynote by Elizabeth Fowler, JD, PhD
- Roundtable on Role of Leadership in Advancing Health Equity

DAY II: TUESDAY, JUNE 8, 2021

10-11 am **MINI SUMMITS ROUND III (Concurrent Sessions)**

17. State Initiatives to Address Racial and Ethnic Disparities	18. Leveraging Tech and IT to Reduce Disparities & COVID-19 Vaccine Equity Index	19. Advanced Primary Care Models that Address Health Equities	20. Risks and Lessons Learned from COVID and Disability	21. Startup Showcase: Digital Health Start-ups Tackling Health Inequity	22. CMS Office of Minority Health & What if we Treated Black Bodies like White Bodies?	23. Advancing Health Equity in Health Policy Publishing
--	--	---	---	---	--	---

11:15 am-12:15 pm **MINI SUMMITS ROUND IV (Concurrent Sessions)**

24. Advancing Health Equity for the Arab American Community	25. How Health Plans Advance Health Equity & Rethink How Foundations Evaluate Grantees	26. Funding for Health Equity in Healthcare Institutional Budgets	27. Healthcare AI Strategies to Advance Health Equity	28. Addressing Culture and Competency in Care for People with Disability	29. Physician Organization Initiatives to Advance Health Equity	30. Oregon’s Medicaid Coordinated Care Organizations Are Advancing Health Equity
---	--	---	---	--	---	--

12:15-1 pm Luncheon Break and Visit Exhibit Hall

1-4:30 pm **DAY II PLENARY SESSION:**

- How the COVID-19 Revealed Structural Racism and Health Disparities by Bassett, MD, Besser, MD and Jha, MD
- Health Equity for Black Americans by Marcella Nunez-Smith, MD, MHS and Reed Tuckson, MD
- Health Equity for Native Americans by Mary Owen, MD
- Health Equity for Latinx Americans by Elena Rios, MD, MSPH, FACP
- Health Equity for Asian Americans/Pacific Islanders by Juliet Choi, JD
- Health Equity for the Arab American Community by Raed Al Naser, MD

Continued next page

DAY III: WEDNESDAY, JUNE 9, 2021

10-11 am **MINI SUMMITS ROUND V (Concurrent Sessions)**

31. More Than Words: Boards of Directors Role in Health Equity Accountability

32. Pandemic Response in SF and Oakland Latinx Community & Investing in Latino-led Organizations to Achieve Health Equity

33. Native American Health Professions Workforce Development

34. Leveraging Faith Based Organizations for Care Coordination & Increasing Healthy Lifestyle Through Healthy Church Challenge

35. Disparities in Home Dialysis Access & Case Study: North Carolina Latinx Advocacy Team

36. The Massachusetts Upstream Investment Program & NCQA and the Medical Home Network

37. Food as Medicine to Promote Health Equity & Medical Financial Partnerships (MFPs)

11:15 am-12:15 pm **MINI SUMMITS ROUND VI (Concurrent Sessions)**

38. Health Equity in Medicaid Payment and Care Delivery Reform

39. COVID Response at Brigham and Women's Hospital & Using PRAPARE to Collect Data to Advance Health Equity

40. Engaging the Native American Community in Health Research

41. Creating Inclusive Hospitals for the LGBTQ+ Community

42. Maryland Primary Care Program & Orange County, CA Equity Map

43. Health Equity Strategies in Population Health Initiatives & Global Diversity, Equity & Inclusion Benchmarks

44. Legal Information and Rights as an Element of Care & Social Inequities as Enterprise Risks for Health Care Organizations

12:15-1 pm Luncheon Break and Visit Exhibit Hall

1-5 pm **DAY III PLENARY SESSION:**

- Foundation Welcome
- Health Equity for People with Disabilities by Mai Pham, MD, MPH
- Keynote: How to be an Antiracist by Ibram X. Kendi, PhD
- Health Equity for the LGBTQI+ Community by Alphonso David, JD
- Advancing Maternal Health Equity by Laurie Zephyrin, MD, MPH, MBA
- Eradicating Ageism by Sarita Mohanty, MD, MPH, MBA and Terry Fulmer, PhD, RN

DAY IV: THURSDAY, JUNE 10, 2021

10:30 am-4 pm **CLOSING PLENARY SESSION:**

- Foundation Welcome
- Closing Keynote Address by CDC Director Rochelle Walensky, MD, MPH
- Senior Equity and Diversity Leaders Best Practices Roundtable
- Advancing Health Equity through Patient-Centered Research
- The Role of Healthcare Technology in Advancing Health Equity
- Healthcare Anchor Network Health Equity Initiatives
- Governance & Health Equity: Leveraging Boards for Maximum Impact

VIRTUAL HEALTH EQUITY SUMMIT

DETAILED AGENDA

All times listed are EDT.

DAY I: MONDAY, JUNE 7, 2021

MINI SUMMITS ROUND I

10:00 am – 11:00 am (Concurrent Sessions)

MINI SUMMIT 1: Embedding Health Equity in Patient Safety and Clinical Quality Initiatives

10:00 am Introductions and Panel Discussion

Donald M. Berwick, MD, *President Emeritus and Senior Fellow, Institute for Healthcare Improvement; Former Administrator, Centers for Medicare and Medicaid Services, Newton Centre, MA*

Dheerendra Kommala, MD, *Chief Medical Officer, ECRI; Former Global Vice President of Medical Affairs, Baxter Healthcare, Plymouth Meeting, PA*

Kedar Mate, MD, *President and Chief Executive Officer, Institute for Healthcare Improvement (IHI); President, IHI Lucian Leape Institute; Assistant Professor of Medicine, Weill Cornell Medical College, Boston, MA*

Ronald M. Wyatt, MD, MHA, *Vice President and Patient Safety Officer, MCIC Vermont; Former Chief Quality Officer, Cook County Health; Former Chief Quality Officer, Hamad Health Care Institute (Qatar); Former Patient Safety Officer and Medical Director, The Joint Commission, Chicago, IL*

Mark Smith, MD, MBA, *Founding President and Former Chief Executive Officer, California Health Care Foundation; Clinical Professor of Medicine, University of California, San Francisco; Attending Physician, Positive Health Program for AIDS Care, San Francisco General Hospital, Oakland, CA (Moderator)*

MINI SUMMIT 2: Part I: Barriers to Care for LGBTQ Communities: Inaccessibility of Culturally Competent Care (American Health Law Association Webinar Rebroadcast)

10:00 am Introductions

Abigail Cousolle, JD, *Senior Staff Attorney, National Health Law Project; Former Greenberg Traurig Equal Justice Works; Staff Attorney, Western Center on Law & Poverty, Los Angeles, CA*

Aldy Duffield, *Senior Manager, Healthcare, Apple; Former Director, Global Benefits, Dell, Austin, TX*

Kameryn Lee, MD, MSPH, *Vice President of Medical Affairs and Health Equity, FOLX Health, Boston, MA*

Omar Gonzalez-Pagan, JD, MA, *Senior Attorney and Healthcare Strategist, Lambda Legal; Former Associate General Counsel, Massachusetts Office of the Inspector General, New York, NY*

Gregory E. Fosheim, JD, MPH, *Associate, McDermott Will & Emery LLP; Former Microbiologist, Division of Healthcare Quality Promotion, US Centers for Disease Control, Chicago, IL (Moderator)*

MINI SUMMIT 3: Combating Anti-Asian Sentiment: A Practical Guide for Clinicians & Advancing Health Equity in Access to Mental Health Services for Migrants

10:00 am Combating Anti-Asian Sentiment: A Practical Guide for Clinicians

James H. Lee, MD, *Psychiatry Resident, Department of Psychiatry and Psychology, University of Washington, Seattle, WA*

10:30 am Advancing Health Equity in Access to Mental Health Services for Migrants

Sergio Aguilar-Gaxiola, MD, PhD, *Professor, Clinical Internal Medicine, Director, Center for Reducing Health Disparities, School of Medicine, University of California, Davis; Principal Investigator, Mexican American Prevalence and Services Survey, Davis, CA*

MINI SUMMIT 4: Case Studies in Declaring Racism a Public Health Crisis

10:00 am Introductions and Panel Discussion

Heidi Gullett, MD, *Associate Director, Center for Community Health Integration, School of Medicine, Case Western Reserve University; Medical Director, Cuyahoga County Board of Health, Parma, OH*

Lilliann M. Paine, MPH, *Director of Technical Assistance and Business Development, National Birth Equity Collaborative; Public Member, Governor's Health Equity Council; Former Chief of Staff for Health Commissioner, Milwaukee Health Department, Milwaukee, WI*

Jeffery Roman, *Executive Director, Office on African American Affairs, Milwaukee County; Executive Director, Urban Roots Milwaukee; Equal Opportunity Coordinator, Community Advocates Public Policy Institute; Past Chair, Milwaukee Equal Rights Commission, Milwaukee, WI*

Eddie Taylor, MBA, *Owner, Taylor Oswald LLC; Chair, Cuyahoga County Citizens' Advisory Council on Equity; Chair, University Hospitals Cleveland Medical Center, Cleveland, OH*

Julie Morita, MD, *Executive Vice President, Robert Wood Johnson Foundation; Former Commissioner and Chief Medical Officer, Chicago Department of Public Health, Princeton, NJ (Moderator)*

MINI SUMMIT 5: Addressing the Social Determinants of Health of the Native American Community to Enhance Healthcare Access and Equity

10:00 am Introductions and Panel Discussion

Cathy Chavers, *Tribal Chairwoman, Bois Forte Band of Chippewa, Nett Lake, MN*

Tom Anderson, MPH, *Cherokee Nation; Executive Director, Association of American Indian Physicians Staff Adjunct Faculty, University of Oklahoma, Oklahoma City, OK*

Melvina L. McCabe, MD, *Professor Emeritus of Family Medicine, School of Medicine, University of New Mexico, Albuquerque, NM (Moderator)*

MINI SUMMIT 6: Big Data and Health Equity: Leveraging Social Risk Scoring and Hospital Data to Drive Health Equity & Concrete Strategies to Address Perinatal Equity

10:00 am Leveraging Social Risk Scoring and Hospital Data to Drive Health Equity

Ali Rosenberg, MPH, *Project Manager of Quality Data, Colorado Hospital Association; Former Project Manager for Pediatric Quality, Mount Sinai Health System, Greenwood Village, CO*

Kurt Waltenbaugh, *Founder and Chief Executive Officer, Carot Health; Former Senior Director, Product Strategy, Optum, Minneapolis, MN*

Essey Yirdaw, MPH, *Director, Data and Analytics, Colorado Hospital Association, Denver, CO (Moderator)*

10:30 am Concrete Strategies to Address Perinatal Equity

Erika Edwards, PhD, MPH, *Director of Data Science, Vermont Oxford Network; Research Associate Professor of Statistics and Pediatrics, University of Vermont, Burlington, VT*

MINI SUMMIT 7: Standardizing Health Equity Competencies across Health Professions Training Programs

10:00 am Introductions and Panel Discussion

Rohini Ganjoo, PhD, Assistant Professor, Department of Biomedical Laboratory Sciences; Director, MSHS in Medical Laboratory Science, MSHS in Immunohematology and Biotechnology, The George Washington University School of Medicine and Health Sciences, Washington, DC

Kathleen Thoma, EdD, CCRP, CPH, Director of Clinical Research Administration BSHS Program and Assistant Professor, The George Washington University School of Medicine and Health Sciences, Washington, DC

Maranda C. Ward, EdD, MPH, Assistant Professor and Emerging Scholars Fellow, Antiracism and Health Equity, The George Washington University School of Medicine and Health Sciences, Washington, DC

Heather Yoho, AMSHS Candidate; Research Assistant at Core Health, School of Medicine and Health Sciences, The George Washington University, Washington, DC

MINI SUMMIT 8: Advancing Health Equity and Antiracism in Health Services Research

10:00 am Introductions and Panel Discussion

Alyce S. Adams, PhD, Associate Director, Health Equity and Community Engagement, Stanford Cancer Institute; Vice Chair, AcademyHealth, San Francisco, CA

Ninez A. Ponce, MPP, PhD, Director, UCLA Center for Health Policy Research; Principal Investigator, California Health Interview Survey; Professor, Department of Health Policy and Management, UCLA Fielding School of Public Health, Los Angeles, CA

Efrain Talamantes, MD, Chief Operating Officer, AltaMed Health Service; Former Associate Director, Center for Reducing Health Disparities, UC Davis Health, Los Angeles, CA

Lisa Simpson, MB, BCh, MPH, FAAP, President and Chief Executive Officer, AcademyHealth; Former Endowed Chair in Child Health Policy, University of South Florida; Former Director, Child Policy Research Center, Cincinnati Children's Hospital Medical Center, Washington, DC (Moderator)

11:00 am Transition Break

MINI SUMMITS ROUND II

11:15 am – 12:15 pm (Concurrent Sessions)

MINI SUMMIT 9: Implementing Supply Chain Strategies in Healthcare Organizations to Address Health Equities and Disparities

11:15 am Introductions and Panel Discussion

Motz Feinberg, MBA, Vice President Supply Chain, Cedars-Sinai Health System; Former Vice President Supply Chain Operations, Kaiser Permanente, Santa Monica, CA

Dameka Miller, MPA, Vice President, Strategic Sourcing and Value Analysis, Trinity Health; Former Region Director, Premier Inc., Detroit, MI

Shaleta Dunn Vick, Senior Director Strategic Programs, Supplier Diversity, Vizient; Former Director, Supplier Diversity and Diverse Talent, ManpowerGroup, Dallas, TX

Régine Honoré Villain, MPH, Senior Vice President, Supply Chain Network and Chief Supply Chain Officer, Ochsner Health System; Vice President, Supply Chain Operations, NYU Langone Health, New Orleans, LA

Karen Conway, MSHCD, CMRP, Vice President, Healthcare Value, GHX; Past Chair, Association for Health Care, Resource and Materials Management (AHRMM), Colorado Springs, CO (Moderator)

MINI SUMMIT 10: Part II: Barriers to Care for LGBTQ Communities: Overcoming Low Quality and Inequitable Care (American Health Law Association Webinar Rebroadcast; Live Q&A)

11:15 am Introductions and Panel Discussion

Abigail Cousolle, JD, Senior Staff Attorney, National Health Law Project; Former Greenberg Traurig Equal Justice Works; Staff Attorney, Western Center on Law & Poverty, Los Angeles, CA

Aldy Duffield, Senior Manager, Healthcare, Apple Inc., Cupertino, CA

Gregory E. Fosheim, JD, MPH, Associate, McDermott Will & Emery LLP; Former Microbiologist, Division of Healthcare Quality Promotion, US Centers for Disease Control; Chicago, IL

Kameryn Lee, MD, MSPH, Vice President of Medical Affairs and Health Equity, FOLX Health, Boston, MA

Omar Gonzalez-Pagan, JD, MA, Senior Attorney and Healthcare Strategist, Lambda Legal; Former Associate General Counsel, Massachusetts Office of the Inspector General, New York, NY (Moderator)

MINI SUMMIT 11: Applying an Institution's Community Health Needs Assessment (CHNA) to Strengthen Health Equity in the Community

11:15 am Introductions and Panel Discussion

Michael Bilton, MPP, System Director, Community Health/Community Benefit, CommonSpirit Health; Former Executive Director, Association for Community Health Improvement, San Francisco, CA

Jaime Dirksen, MA, Vice President, Community Health and Well-Being, Trinity Health; Former Managing Deputy Commissioner, Chicago Department of Public Health, Detroit, MI

Danielle Price, Director, Community Health Engagement, University Hospitals; Former Program Coordinator, Neighborhood Connections, Cleveland, OH

Marcos Pesquera, MPH, System Vice President, Community Benefit, Health Equity, Diversity and Inclusion, CHRISTUS Health; Former Executive Director, Center for Health Equity and Wellness; Senior Director Diversity Programs, Adventist HealthCare, Irving, TX (Moderator)

MINI SUMMIT 12: The Many Dimensions of Domestic Violence & Health Equity, COVID-19 and Homelessness

11:15 am The Many Dimensions of Domestic Violence: Policies to Address Root Causes and Prevent Domestic Violence and Advance Health Equity

Debbie I. Chang, MPH, President and Chief Executive Officer, Blue Shield of California Foundation; Former Director, Children's Health Insurance Program (CHIP); Former Deputy Secretary of Health Care Financing, Maryland Department of Health and Mental Hygiene, San Francisco, CA

11:45 am Health Equity, COVID-19 and Homelessness

John Maceri, Chief Executive Officer, The People Concern; Board Chair, Santa Monica Bay Area Human Relations Council; Advisory Board, Ziman Center for Real Estate Affordable Housing, UCLA, Los Angeles, CA

MINI SUMMIT 13: Meet the VCs Funding “Health Equity” Startups

11:15 am Introductions and Panel Discussion

Julian J. Harris, MD, MBA, *Partner, Health Care Services and Technology, Deerfield; Chairman and Chief Executive Officer, ConcertoCare; Adjunct Professor, Medical Ethics and Health Policy, University of Pennsylvania, New York, NY*

Kayode Owens, MBA, *General Partner, Unseen Capital; Former Partner, humble ventures, New York, NY*

Maria Velissaris, MBA, *Founding Partner, SteelSky Ventures; Founder, Wakeboxes, New York, NY*

Marcus Whitney, *Founder and Managing Partner, Jumpstart Nova; Co-Founder and Chief Strategy Officer, Jumpstart Health Investors Full-time; Founder, Creative Power, Nashville, TN*

Candice Morgan, MSc, *Equity, Diversity & Inclusion Partner, GV (Google Ventures); Former Head of Inclusion & Diversity, Pinterest, San Francisco, CA (Moderator)*

MINI SUMMIT 14: Advanced Alternative Payment Models: Can They Reduce or do They Exacerbate Inequities in Health Outcomes?

11:15 am Introductions and Panel Discussion

Ezekiel J. Emanuel, MD, *Vice Provost for Global Initiatives, Diane V.S. Levy and Robert M. Levy University Professor, Co-Director of the Health Transformation Institute and Chair, Department of Medical Ethics, University of Pennsylvania; Former Special Advisor, Office of Management and Budget (Obama), Philadelphia, PA*

Meena Seshamani, MD, PhD, *Vice President, Clinical Care Transformation, MedStar Health; Board, Health Care Transformation Task Force and The Coalition to Transform Advanced Care (C-TAC), Washington, DC*

Marc Rothman, MD, *Chief Medical Officer, Signify Health; Founder, Dementia Spring Foundation, Louisville, KY (Moderator)*

MINI SUMMIT 15: Strategies for Advancing Racial Health Equity through Health-related Scholarly Publishing

11:15 am Introductions and Panel Discussion

Rhea Boyd, MD, MPH, *Pediatrician and Child Health Advocate, Palo Alto Medical Foundation and UCSF Benioff Children’s Hospital Oakland; Co-author, On Racism: A New Standard for Publishing on Racial Health Inequities, and, Medicine’s Privileged Gatekeepers: Producing Harmful Ignorance about Racism and Health, Health Affairs Blog, San Diego, CA*

Fernando De Maio, PhD, *Director, Health Equity Research and Data Use, American Medical Association; Professor, Department of Sociology, DePaul University; Co-author, Medicine’s Privileged Gatekeepers: Producing Harmful Ignorance about Racism and Health, Health Affairs Blog, Chicago, IL*

Edwin G. Lindo, JD, *Assistant Dean for Social & Health Justice, School of Medicine, University of Washington; Co-Founder and Curator, Estelita’s Library: Justice Focused Community Library & Bookstore; Co-author, On Racism: A New Standard for Publishing on Racial Health Inequities, Health Affairs Blog, Seattle, WA*

Vabren Watts, PhD, *Director of Health Equity, Health Affairs; Former Deputy Director, Division of Diversity and Health Equity, American Psychiatric Association, Washington, DC (Moderator)*

MINI SUMMIT 16: Preventing Health Equity and Belonging Leaders from Becoming Collateral Damage in the Fight to End Institutional Racism

11:15 am Introduction and Discussion

Jesse Raney Bridges, MEd, *Senior Vice President of Diversity, Equity and Inclusion, EVERFI; Former Senior Director, Organizational Culture, Diversity & Inclusion, EAB, Washington, DC*

Andres Gonzalez, *Vice President, Chief Diversity Officer, Froedtert Health; Former Chief Diversity & Inclusion Officer, Baystate Health; Former Director, Diversity & Community Relations, Cleveland Clinic, Menomonee Falls, WI*

Maria Hernandez, PhD, *President and Chief Operating Officer, Impact4Health; Practice Leader, Global Consulting Services, InclusionINC, Oakland, CA*

Duane Reynolds, MHA, *Founder and Chief Executive Officer, Just Health Collective, LLC; Former President and CEO, Institute for Diversity and Health Equity, American Hospital Association, Atlanta, GA*

Belinda Muench, *M13 Management Partners; Principal, M13 Management Partners; Former Vice President, Strategic Services, Advantum Health, Louisville, KY (Moderator)*

12:15 am Luncheon Break

OPENING PLENARY SESSION

1:00 pm Co-chair Welcome and Introductions



Mark Smith, MD, MBA, *Founding President and Former Chief Executive Officer, California Health Care Foundation; Clinical Professor of Medicine, University of California, San Francisco; Attending Physician, Positive Health Program for AIDS Care, San Francisco General Hospital, Oakland, CA*



Laurie Zephyrin, MD, MPH, MBA, *Vice President for Advancing Health Equity, Commonwealth Fund; Former National Director, Reproductive Health Program; Former Acting Deputy Under Secretary for Health for Community Care, US Department of Veterans Affairs, New York, NY*



Foundation Welcome:

Richard Besser, MD, *President and Chief Executive Officer, Robert Wood Johnson Foundation; Former Chief Health and Medical Editor, ABC News; Former Acting Director, Centers for Disease Control and Prevention, Princeton, NJ*



David Blumenthal, MD, MPP, *President, Commonwealth Fund; Former National Coordinator for Health Information Technology; Former Samuel O. Thier Professor of Medicine, Harvard Medical School; Former Chief Health Information and Innovation Officer, Partners Healthcare System, New York, NY*

1:30 pm

A Discussion with Center for Medicare and Medicaid Services Administrator Chaquita Brooks-LaSure



Chiquita Brooks-LaSure, MPP, *Administrator, Centers for Medicare and Medicaid Services, US Department of Health and Human Services; Former Deputy Director for Policy, CMS Center for Consumer Information and Insurance Oversight, Washington, DC*

Interviewed by:



Mark Smith, MD, MBA, *Founding President and Former Chief Executive Officer, California Health Care Foundation; Clinical Professor of Medicine, University of California, San Francisco; Attending Physician, Positive Health Program for AIDS Care, San Francisco General Hospital, Oakland, CA*

DAY II: TUESDAY, JUNE 8, 2021

MINI SUMMITS ROUND III

10:00 am – 11:00 am (Concurrent Sessions)

MINI SUMMIT 17: State Initiatives to Address Racial and Ethnic Disparities in their COVID-19 Responses and Beyond

10:00 am Introductions and Panel Discussion

Monica Bharel, MD, MPH, Commissioner, Massachusetts Department of Health; Former Medical Director, Boston Health Care for the Homeless Program, Boston, MA

Pamela Riley, MD, MPH, Medical Director, Department of Health Care Finance, Washington, DC; Former Vice President, Delivery System Reform, The Commonwealth Fund, Washington, DC

Rebecca Cooper, MPH, Policy Associate, National Academy for State Health Policy, Washington, DC (Moderator)

MINI SUMMIT 18: How the Palo Alto Medical Foundation/ Sutter Health Leveraged Technology and Information Systems to Reduce Health Disparities & Sutter Health Measuring and Promoting SARS-CoV-2 Vaccine Equity: Development of a COVID-19 Vaccine Equity Index

10:00 am Case Study: How the Palo Alto Medical Foundation/ Sutter Health Leveraged Technology and Information Systems to Reduce Health Disparities

Ed M. Yu, MD, CMQ, CPPS, CPE, Chief Quality Officer, Palo Alto Medical Foundation/Sutter Health; Chairperson, Patient Safety Committee, Sutter Health, Mountain View, CA

10:30 am Case Study: Sutter Health Measuring and Promoting SARS-CoV-2 Vaccine Equity: Development of a COVID-19 Vaccine Equity Index

Stephen Lockhart, MD, PhD, Founding Director Emeritus, Institute for Advancing Health Equity, Sutter Health; Chief Medical Officer (retired), Sutter Health; Oakland, CA

Alice R. Pressman, PhD, Executive Director, Center for Health Systems Research; Research Director, Institute for Advancing Health Equity, Sutter Health, Walnut Creek, CA

Kristen M. J. Azar, R.N., MSN/MPH, Scientific Medical Director, Institute for Advancing Health Equity, Sutter Health, Walnut Creek, CA (Moderator)

MINI SUMMIT 19: PCMH/Advanced Primary Care Models that Address Health Equities

10:00 am Introductions and Panel Discussion

Ashraf Affan, MD, Chief Executive Officer, Pediatric Innovation Center; President and Founder, Angel Kids Pediatrics, Jacksonville Beach, FL

Jay W. Lee, MD, MPH, Chief Medical Officer, Share Our Selves; Associate Clinical Professor of Family Medicine, UC Irvine School of Medicine, Los Angeles, CA

Jonathan Leizman, MD, Chief Medical Officer, Premise Health; Former Medical Director, Cleveland Clinic at Work, Brentwood, TN

Ann Greiner, MA, President and Chief Executive Officer, Primary Care Collaborative (PCC); Former Vice President of Public Affairs, National Quality Forum (NQF) Washington, DC (Moderator)

1:45 pm

Keynote Address



Camara Phyllis Jones, MD, MPH, PhD, Senior Fellow, Satcher Health Leadership Institute and Cardiovascular Research Institute; Adjunct Associate Professor, Community Health & Preventive Medicine, Morehouse School of Medicine; Former President, American Public Health Association, Atlanta, GA

2:35 pm

A History of Xenophobia in the United States



Erika Lee, PhD, Regents Professor, a Distinguished McKnight University Professor, Rudolph J. Vecoli Chair in Immigration History, Director of the Immigration History Research Center, University of Minnesota; Author, America for Americans: A History of Xenophobia in the United States, Minneapolis, MN



Interviewed by:

Sherry M. Hirota, Chief Executive Officer, Asian Health Services; Health Chair, Dellums Commission: Expanded Pathways of Young Men of Color, Oakland, CA

3:05 pm

Transition Break

3:20 pm

Health Equity: Moving from Understanding to Solutions



Lisa A. Cooper, MD, MPH, Bloomberg Distinguished Professor, Equity in Health and Healthcare and James F. Fries Professor of Medicine, Johns Hopkins Medicine; Director, Johns Hopkins Center for Health Equity, Baltimore, MD



Interviewed by:

Sandra R. Hernández, MD, President and Chief Executive Officer, California Health Care Foundation; Former Chief Executive Officer, The San Francisco Foundation, Oakland, CA

4:00 pm

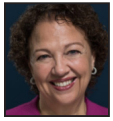
Keynote: CMMI Keynote



Elizabeth Fowler, JD, PhD, Director, Center for Medicare and Medicaid Innovation (CMMI) and Deputy Administrator, Centers for Medicare and Medicaid Services, US Department of Health and Human Services, Washington, DC

4:25 pm

Roundtable on the Role of Health System Leadership in Advancing Health Equity



Paloma Hernandez, MPH, President and Chief Executive Officer, Urban Health Plan; Secretary, National Association of Community Health Centers, Bronx, NY



Sherry M. Hirota, Chief Executive Officer, Asian Health Services; Health Chair, Dellums Commission: Expanded Pathways of Young Men of Color, Oakland, CA



Wright L. Lassiter, III, MHA, President and Chief Executive Officer, Henry Ford Health System; Former Chief Executive Officer, Alameda Health System, Detroit, MI



Roxie C. Wells, MD, President, Cape Fear Valley Hoke Hospital; Board of Trustees, American Hospital Association, Raeford, NC



Susan Dentzer, Senior Policy Fellow, Duke-Margolis Center for Health Policy; Former Editor in Chief, Health Affairs; Former Health Correspondent, PBS NewsHour, Washington, DC (Moderator)

5:30 pm

Day I Adjournment

MINI SUMMIT 20: Risks and Lessons Learned from COVID and Disability

10:00 am Introductions and Panel Discussion

Matt Holder, MD, MBA, FAADM, *Expert in Developmental Medicine, Chief Executive Officer, Lee Specialty Clinic; President, American Board of Developmental Medicine; Past President Emeritus, American Academy of Developmental Medicine and Dentistry, Prospect, KY*

Barbara Merrill, JD, *Chief Executive Officer, American Network, of Community Options and Resources (ANCOR); Former Director of Government Relations, MENTOR Network, Alexandria, VA*

Ari Ne'eman, *Senior Research Associate, Harvard Law School Project on Disability; PhD Candidate, Health Policy; Harvard University, Cambridge, MA*

Wendy J. Ross, MD, *Developmental and Behavioral Pediatrician, Center for Pediatric Development and Autism Inclusion Resources; Director, Center for Autism and Neurodiversity, Jefferson University Hospitals, Philadelphia, PA*

Hoangmai H. Pham, MD, MPH, *President, Institute for Exceptional Care; Former Vice President, Provider Alignment Solutions, Anthem; Former Chief Innovation Officer, Center for Medicare and Medicaid Innovation, Washington, DC (Moderator)*

MINI SUMMIT 21: Startup Showcase: How Digital Health Start-ups are Tackling Health Inequity

10:00 am Introductions and Panel Discussion

Helen Adeosun, EdM, *Chief Executive Officer, President and Founder, CareAcademy, Boston, MA*

Manik Bhat, *Founder and Chief Executive Officer, Healthify; Mentor, Blueprint Health LLC, New York, NY*

Dale Bryant, MBA, *Co-Founder, Hico Health, New York, NY*

Melissa Hanna, JD, MBA, *Co-Founder, Mahmee, West Hollywood, CA*

Trenor Williams, MD, *Co-Founder and Chief Executive Officer, Socially Determined, Washington, DC*

Indu Subaiya, MD, MBA, *Co-founder and President, Catalyst @ Health 2.0; Former Senior Advisor, HIMSS; Former Chief Executive Officer and Co-Founder, Health 2.0, Los Angeles, CA (Moderator)*

MINI SUMMIT 22: CMS Office of Minority Health & Race Based Medicine: “What if we Treated Black Bodies like White Bodies”?

10:00 am Overview of the Resources of the Office of Minority Health, Centers for Medicare and Medicaid Services

LaShawn McIver, MD, MPH, *Director, Office of Minority Health, Centers for Medicare and Medicaid Services; Former Senior Vice President, Government Affairs, Community Integrated Health and Advocacy, American Diabetes Association, Washington, DC*

10:30 am Race Based Medicine: “What if we Treated Black Bodies like White Bodies”?

Aaron Cohen, MD, *Senior National Medical Director and Chief Medical Officer, Optum, Chicago, IL*

Jessica Dale, RN, MSN, CCFP, CTP, DNP (c), *Associate Director of Health Equity, UnitedHealth Group, Madison, WI*

Meg Good, PhD, *Senior Vice President, Optum Enterprise Analytics, Eden Prairie, MN*

MINI SUMMIT 23: Advancing Health Equity in Health Policy Publishing

10:00 am Introductions and Panel Discussion

Austin B. Frakt, PhD, *Editor-in-Chief, HSR (Health Services Research); Director, Partnered Evidence-based Policy Resource Center, Boston VA Healthcare System; Professor, Boston University School of Public Health; Senior Research Scientist, Harvard TH Chan School of Public Health, Melrose, MA*

Sachin H. Jain, MD, MBA, *Co-Editor-in-Chief, Healthcare: The Journal of Delivery Science and Innovation; President and Chief Executive Officer, SCAN Group and Health Plan, Los Angeles, CA*

Thomas H. Lee, MD, MSc, *Editor-in-Chief and Editorial Board Co-Chair, NEJM Catalyst Innovations in Care Delivery; Chief Medical Officer, Press Ganey Associates, South Bend, IN*

Vabren Watts, PhD, *Director of Health Equity, Health Affairs, Former Deputy Director, Division of Diversity and Health Equity, American Psychiatric Association, Washington, DC*

Rita F. Redberg, MD, MSc, *Editor-in-Chief, JAMA Internal Medicine; Professor, Medicine, University of California San Francisco, San Francisco, CA (Moderator)*

11:00 am Transition Break

MINI SUMMITS ROUND IV

11:15 am – 12:15 pm (Concurrent Sessions)

MINI SUMMIT 24: Advancing Health Equity for the Arab American Community

11:15 am Introductions and Panel Discussion

Raed Al Naser, MD, *Critical Care Physician, Sharp Grossmont Hospital; President, San Diego Chapter, National Arab American Medical Association, San Diego, CA*

Nidal Moukaddam, MD, PhD, *Associate Professor, Psychiatry and Behavioral Sciences, Baylor College of Medicine, Houston, TX*

Omar M. Lattouf, MD, PhD, *Cardiovascular Surgeon, Mount Sinai Morningside Hospital; Chair, National Arab American Medical Association Foundation; Founding Chair OurHealth.NYC, New York, NY (Moderator)*

MINI SUMMIT 25: Health Plan Initiatives in Advancing Health Equity & Rethink How Foundations Evaluate Grantees

11:15 am Health Plan Initiatives in Advancing Health Equity

Catherine Anderson, MPA, *Senior Vice President, Policy and Strategic Engagement, UnitedHealthcare, Washington, DC*

James Kyle, MD, MDiv, *Medical Director for Quality, Diversity, Equity and Inclusion, LA Care; Former Dean, School of Public Health, Loma Linda University, Whittier, CA*

11:45 am To Support Health Equity, Let's Rethink How Foundations Evaluate Grantees

Jason Lacsamana, MPH, *Director of Programs and Partnerships, St. Joseph Community Partnership Fund; Health Educator of the Year, Society of Public Health Educators; Civil Rights Leadership Award, California Association of Human Relations Associations, Irvine, CA*

Katie Landon Miller, MPH, *Program Manager, Prevention Institute, Oakland, CA*

Sandra Viera, MPA, *Associate Program Director, Prevention Institute, Los Angeles, CA*

MINI SUMMIT 26: Building Measurable Funding for Health Equity Initiatives into Healthcare Institutional Budgets

11:15 am Introductions and Panel Discussion

Cindy Clemence, CPA, FHFMA, Senior Vice President and Chief Financial Officer, Trinity Health, Livonia, MI

Melinda Hancock, MBA, Chief Administrative and Financial Officer, VCU Health System; Former Chief Financial Officer, Bon Secours Virginia Health System, Richmond, VA

Scott Hawig, CPA, CMA, MBA, Executive Vice President of Finance, Chief Financial and Administrative Officer and Treasurer, Froedtert Health, Milwaukee, WI

James G. Lee, FHFMA, Executive Vice President & Chief Financial Officer, Adventist HealthCare, Gaithersburg, MD

Joseph J. Fifer, FHFMA, CPA, President and Chief Executive Officer, Health Care Financial Management Association (HFMA); Former Vice President, Hospital Finance, Spectrum Health, Chicago, IL (Moderator)

MINI SUMMIT 27: Healthcare Artificial Intelligence Strategies to Advance Health Equity & Bias in Clinical AI: Challenges and Potential Solutions

11:15 am Healthcare Artificial Intelligence Strategies to Advance Health Equity

Collin Stultz, MD, PhD, Cardiologist, Massachusetts General Hospital; Professor of Electrical Engineering and Computer Science, Massachusetts Institute of Technology, Cambridge, MA

11:45 am Bias in Clinical AI: Challenges and Potential Solutions

Regina Barzilay, PhD, Delta Electronics Professor of AI and Health AI, School of Engineering Co-lead of AI, Jameel Clinic for Machine Learning in Health, Massachusetts Institute of Technology; McArthur Fellow, Cambridge, MA

MINI SUMMIT 28: Addressing Culture and Competency in Care for People with Disability

11:15 am Introductions and Panel Discussion

Regina James, MD, Deputy Medical Director, American Psychiatric Association; Former Director, Clinical and Health Services Research, National Institute on Minority Health and Health Disparities, Washington, DC

Alice Kuo, MD, Associate Professor of Internal Medicine, Pediatrics, and Psychiatry and Biobehavioral Sciences, David Geffen School of Medicine; Professor of Health Policy and Management, Fielding School of Public Health, University of California Los Angeles, Los Angeles, CA

Megan A. Morris, PhD, MPH, Assistant Professor, Department of Family Medicine, ACCORDS Investigator and Qualitative and Mixed Methods Core Lead and Founder, Director of Learning Collaborative to Address Disability Equity in Healthcare (LEADERS), Anschutz Medical Campus, University of Colorado, Aurora, CO

Maura Sullivan, MPA, Director of Government Affairs and Program Director, Operation House Call, The Arc of Massachusetts, Lexington, MA

Rylin Rodgers, Director of Public Policy, Association of University Centers on Disabilities (AUCD); Former Training Director and Family Leadership Coordinator, Riley Child Development Center, Lebanon, IN (Moderator)

MINI SUMMIT 29: Case Studies in Successful Physician Organization Initiatives to Advance Health Equity

11:15 am Introductions and Panel Discussion

Eboni Price-Haywood, MD, MPH, FACP, Medical Director, Ochsner Xavier Institute for Health Equity and Research; Associate Professor, Ochsner Clinical School, University of Queensland, New Orleans, LA

Faisal Syed, MD, National Director of Primary Care, ChenMed; Former Chief Medical Officer, Tampa Family Health Centers, Tampa, FL

Adrienne Wagner, MHSA, FACHE, Regional Vice President, Quality and Patient Safety for Employed Groups, Optum Pacific Northwest, Everett, WA

Donald H. Crane, JD, President and Chief Executive Officer, America's Physician Group, Los Angeles, CA (Moderator)

MINI SUMMIT 30: Health Equity in Medicaid Managed Care: How to Start & How Oregon's Medicaid Coordinated Care Organizations Are Advancing Health Equity

11:15 am Health Equity in Medicaid Managed Care: How to Start

Monica Trevino, Director, Center for Social Enterprise, Michigan Public Health Institute; Coordinator, Medicaid Health Equity Project, East Lansing, MI

11:45 am Case Study: How Oregon's Medicaid Coordinated Care Organizations Are Advancing Health Equity

Ignatius Bau, JD, Health Care Policy/Equity Consultant; Former Program Director, California Endowment; Former Policy Director, Asian & Pacific Islander American Health Forum, San Francisco, CA

12:15 pm Luncheon Break

DAY II PLENARY SESSION

1:00 pm Foundation Welcome



Sandra R. Hernández, MD, President and Chief Executive Officer, California Health Care Foundation; Former Chief Executive Officer, The San Francisco Foundation, Oakland, CA

1:15 pm

How the COVID-19 Pandemic Underscored the Connection between Structural Racism and Health in Every Aspect of Society



Mary T. Bassett, MD, FXB Professor of the Practice of Health and Human Rights, Harvard TH Chan School of Public Health; Director, FXB Center for Health and Human Rights, Harvard University; Former Commissioner of Health, City of New York, Boston, MA



Ashish Jha, MD, MPH, Dean School of Public Health, Brown University; Former KT Li Professor of Global Health, Director, Harvard Global Health Institute, Department of Health Policy and Management, Harvard TH Chan School of Public Health, Providence, RI



Richard Besser, MD, President and Chief Executive Officer, Robert Wood Johnson Foundation; Former Chief Health and Medical Editor, ABC News; Former Acting Director, Centers for Disease Control and Prevention, Princeton, NJ (Moderator)

DAY III: WEDNESDAY, JUNE 9, 2021

MINI SUMMITS ROUND V

10:00 am – 11:00 am (Concurrent Sessions)

MINI SUMMIT 31: More Than Words: The Role of Boards of Directors in Health Equity Accountability Sponsored by the American College of Healthcare Executives (ACHE)

10:00 am Introductions and Panel Discussion

Aimee Claiborne, DA, MBA, Chief Human Resources Officer, Dartmouth-Hitchcock, Boston, MA

Bonnie Mason, MD, Vice President, Diversity and Inclusion, Accreditation Council for Graduate Medical Education (ACGME), Columbia, MD

Stephen N. Potter, MBA, Vice Chair, Board of Trustees, Rush University Medical Center; Director, Miami Corporation and TIAA/Nuveen Churchill Asset, Management BDC Fund, Chicago, IL

Gayle Capozzalo, MPH, FACHE, Executive Director, The Equity Collaborative; Former Chair, ACHE Board of Directors; Former Executive Vice President and Chief Strategy Officer, Yale New Haven Health, Guilford, CT (Moderator)

MINI SUMMIT 32: COVID 19 Pandemic Response in the Latinx Community In San Francisco and Oakland & From Reimagining to Rebuilding: Investing in Latino-led Organizations to Achieve Health Equity

10:00 am Case Study: COVID 19 Pandemic Response in the Latinx Community in San Francisco and Oakland

Alicia Fernandez, MD, General Internist, Zuckerberg San Francisco General; Professor of Medicine, Division of General Internal Medicine; Director, Latinx Center of Excellence, University of California at San Francisco, San Francisco, CA

10:30 am From Reimagining to Rebuilding: Investing in Latino-led Organizations to Achieve Health Equity

Jacqueline Martinez Garcel, MPH, Chief Executive Officer, Latino Community Foundation; Former Vice President, New York State Health Foundation, Oakland, CA

MINI SUMMIT 33: Native American Health Professions Workforce Development to Enhance Healthcare Access and Equity

10:00 am Introductions and Panel Discussion

Carrie Billy, JD, Navajo Nation; President and Chief Executive Officer, American Indian Higher Education Consortium (AIHEC); Former Executive Director, White House Initiative on Tribal Colleges and Universities, Alexandria, VA

Elizabeth A. Fowler, Comanche Nation; Acting Director, Indian Health Service, US Department of Health and Human Services, Washington, DC

Mary J. Owen, MD, Member, Tlingit Nation; Director, Center of American Indian and Minority Health; Assistant Professor, Department of Family Medicine and BioBehavioral Health, University of Minnesota Medical School, Duluth, MN (Moderator)

2:10 pm

Health Equity for Black Americans: Unique Challenges and Opportunities



Marcella Nunez-Smith, MD, MHS, Chair, U.S. COVID-19 Equity Task Force; Senior Advisor, White House COVID-19 Response Team; Associate Dean for Health Equity Research and Associate Professor of Medicine, Public Health and Management Yale University, New Haven, CT



Reed V. Tuckson, MD, FACP, Managing Director, Tuckson Health Connections, LLC; Former Executive Vice President and Chief of Medical Affairs, UnitedHealth Group; Former Senior Vice President, Professional Standards, AMA; Former President, Charles R. Drew University of Medicine and Science; Former Commissioner of Public Health, District of Columbia, Atlanta, GA



Interviewed by:

Laurie Zephyrin, MD, MPH, MBA, Vice President for Advancing Health Equity, The Commonwealth Fund; Former National Director, Reproductive Health Program; Former Acting Deputy Under Secretary for Health for Community Care, US Department of Veterans Affairs, New York, NY

3:00 pm

American Indian and Alaska Native Health Outcomes: How do we change them?



Mary J. Owen, MD, Member, Tlingit Nation; Director, Center of American Indian and Minority Health; Assistant Professor, Department of Family Medicine and BioBehavioral Health, University of Minnesota Medical School, Duluth, MN

3:20 pm

Transition Break

3:30 pm

Health Equity for Latinx Americans: Unique Challenges and Opportunities



Elena V. Rios, MD, MSPH, FACP, President and Chief Executive Officer, National Hispanic Medical Association; President, National Hispanic Health Foundation, Washington, DC

4:00 pm

Health Equity for Asian Americans/Pacific Islanders: Unique Challenges and Opportunities



Juliet K. Choi, JD, President and Chief Executive Officer, Asian & Pacific Islander American Health Forum; Former Chief of Staff and Senior Advisor, US Citizenship and Immigration Services, Washington, DC



Interviewed by:

Charlotte Yeh, MD, Chief Medical Officer, AARP; Board, Coalition to Transform Advanced Care (C-TAC), The Schwartz Center for Compassionate Healthcare and Personal Connected Health Alliance, Dedham, MA

4:30 pm

Health Equity for the Arab American Community: Unique Challenges and Opportunities



Raed Al Naser, MD, Critical Care Physician, Sharp Grossmont Hospital; President, San Diego Chapter, National Arab American Medical Association, San Diego, CA

5:00 pm

Day II Adjournment

MINI SUMMIT 34: Leveraging Faith Based Organizations for Care Coordination; Engaging Healthcare Organizations in Faith Interventions that Promote Equity in Serious Illness Care & Increasing Healthy Lifestyle Behaviors and Engagement with Medicare Beneficiaries Through a 12-week Healthy Church Challenge

- 10:00 am** **Leveraging Faith Based Organizations for Care Coordination & Increasing Healthy Lifestyle Behaviors and Engagement with Medicare Beneficiaries Through a 12-week Healthy Church Challenge**
Melissa Clarke, MD, *Physician Consultant, Healthcare Transformation, 3M Health Care Business Consultant Group; President, BHE Group; Former Assistant Dean of Medical Education, Howard University College of Medicine, Washington DC*
Deonne Gant-Bey, *Program Director, Leadership Council on Health Communities, Washington, DC*

- 10:15 am** **Increasing Healthy Lifestyle Behaviors and Engagement with Medicare Beneficiaries Through a 12-week Healthy Church Challenge**
Camille Clarke-Smith, EDD, CES, MS, *SProgram Manager, Medicare STARS Department, UPMC Health Plan; Founder, THAW (Transforming the Health of African American Women), Pittsburgh, PA*

- 10:30 am** **Engaging Healthcare Organizations in Faith Interventions that Promote Equity in Serious Illness Care**
Rev. Cynthia Carter Perrilliat, MPA, *Executive Director, Alameda County Care Alliance, Oakland, CA*
Elder Angela Overton, *Senior Advisor, Interfaith Workgroup, The Coalition to Transform Advanced Care (C-TAC), Louisville, KY*
Rev. Dr. Tyrone Pitts, *Co-Chairs, Interfaith and Diversity Workgroup, The Coalition to Transform Advanced Care (C-TAC); General Secretary Emeritus, Progressive National Baptist Convention, Inc., Washington, DC (Moderator)*

MINI SUMMIT 35: Disparities in Home Dialysis Access & Case Study: North Carolina Latinx Advocacy Team

- 10:00 am** **Disparities in Home Dialysis Access**
Caitlin Loughery, MPH, *Senior Program Coordinator, National Kidney Foundation of Michigan, Ann Arbor, MI*
Tonya Saffer, MPH, *Head of Government Affairs and Market Access, Outset Medical; Former Vice President for Health Policy, National Kidney Foundation, Washington, DC*
Leslie Trigg, *Chief Executive Officer, Outset Medical, Menlo Park, CA*
- 10:30 am** **Case Study: North Carolina Latinx Advocacy Team and Interdisciplinary Network for COVID-19 (LATIN-19)**
Andrea Thoumi, MPP, MSc, *Health Equity Policy Fellow, Duke-Robert J. Margolis, MD Center for Health Policy, Washington, DC*

MINI SUMMIT 36: Moving Massachusetts Upstream Program & NCQA and the Medical Home Network

- 10:00 am** **The Moving Massachusetts Upstream Program**
Courtney M. Anderson, MPH, *Manager, Health Care Transformation and Innovation, Massachusetts Health Policy Commission, Boston, MA*

- 10:30 am** **Lessons Learned and Promising Practices: Using Community Resource Referral Platforms to Impact Social Determinants of Health**
Keri Christensen, MS, *Director, Strategy Implementation, National Committee for Quality Assurance (NCQA), Washington, DC*
Cheryl Lulias, *President and Chief Executive Officer, Medical Home Network, Chair and Co-Founder, MoreCare, Chicago, IL*
Sana Syal, MPH, *Senior Program Manager, Medical Home Network, Chicago, IL*
Sarah Scholle, DrPH, *Vice President of Research and Analysis, National Committee for Quality Assurance (NCQA), Washington, DC (Moderator)*

MINI SUMMIT 37: Food as Medicine to Promote Health & Health Equity & The Impact of Medical Financial Partnerships (MFPs) in Health Outcomes

- 10:00 am** **Food as Medicine to Promote Health & Health Equity**
Hilary Seligman, MD, MAS, *Professor Departments of Medicine and Epidemiology and Biostatistics, University of California San Francisco; Director, Food Policy, Health, and Hunger Research Program, Center for Vulnerable Populations, Zuckerberg San Francisco General Hospital, San Francisco, CA*
- 10:30 am** **Money Matters: The Impact of Medical Financial Partnerships (MFPs) on Health Equity and Outcomes**
Katherine Gergen Barnett, MD, *Vice Chair of Primary Care Innovation and Transformation, Department of Family Medicine, Boston Medical Center, Boston, MA*
Lucy Marcil, MD, MPH, *Associate Director for Economic Mobility, Center for the Urban Child and Healthy Family, Boston Medical Center; Assistant Professor of Pediatrics in General Pediatrics, Boston University School of Medicine, Boston, MA*
Barry Zuckerman, MD, *Professor and Chair Emeritus, Department of Pediatrics, Boston University School of Medicine; Founder Medical-Legal Partnership for Children, Boston, MA*

- 11:00 am** **Transition Break**

MINI SUMMITS ROUND VI

11:15 am – 12:15 pm (Concurrent Sessions)

MINI SUMMIT 38: Health Equity in Medicaid Payment and Care Delivery Reform

- 11:15 am** **Introductions and Panel Discussion**
Maureen Corcoran, MSN, MBA, *Medicaid Director, Ohio Department of Medicaid; Former Assistant Director, Ohio Department of Mental Health, Columbus, OH*
Lori Coyner, *Director, Oregon Health Authority; Former State Medicaid Director, Oregon Health Authority, Portland, OR*
Kate Massey, MPA, *Senior Deputy Director, Medical Services Administration, Michigan Department of Health and Human Services, Lansing, MI*
Benjamin Money, MPH, *Senior Vice President for Public Health Priorities, National Association of Community Health Centers, Morrisville, NC*
Mark McClellan, MD, PhD, *Director, Robert J Margolis Center for Health Policy and Margolis, Professor of Business, Medicine and Health Policy, Duke University; Former CMS Administrator and FDA Commissioner, Washington, DC (Moderator)*

MINI SUMMIT 39: Centering Equity in the COVID Response at Brigham and Women's Hospital & Using PRAPARE to Collect Data on the Social Determinants of Health and Advance Health Equity

- 11:15 am Case Study: Centering Equity in the COVID Response at Brigham and Women's Hospital**
Cheryl Clark MD, ScD, Hospitalist, Director, Health Equity Research & Intervention, Brigham and Women's Hospital; Assistant Professor of Medicine, Harvard Medical School, Boston, MA
Zara Cooper, MD, MSc, FACS, Kessler Director, Center for Surgery and Public Health, Brigham and Women's Hospital; Associate Professor of Surgery, Harvard Medical School, Boston, MA

- 11:45 pm Using PRAPARE to Collect Data on the Social Determinants of Health and Advance Health Equity**
Yuriko de la Cruz, MPH, CPHQ, Social Determinants of Health Manager, National Association of Community Health Centers, Alexandria, VA
Sarah Halpin, MPH, Program Associate, Research, National Association of Community Health Centers, Alexandria, VA
Nalani Tarrant, MPH, PMP, Deputy Director, Research Projects, National Association of Community Health Centers; Former Director, Measures and Quality Collaboratives, American College of Emergency Physicians, Alexandria, VA

MINI SUMMIT 40: Engaging the Native American Community in Health Research

- 11:15 am Introductions and Panel Discussion**
Melanie Nadeau, MPH, PhD, Turtle Mountain Band of Chippewa Nation; Assistant Director, Assistant Professor, Public Health Program, University of North Dakota; Chair, American Indian Section, North Dakota Public Health Association, Fargo, ND
Melissa Walls, PhD, Bois Forte and Couchiching First Nation Anishinaabe; Director, Great Lakes Hub, Center for American Indian Health; Associate Professor of International Health, Johns Hopkins Bloomberg School of Public Health, Duluth, MN
R. Dale Walker, MD, Cherokee Nation; Professor of Psychiatry and Public Health, School of Medicine, OHSU; Former President, Association of American Indian Physicians, Portland, OR (Moderator)

MINI SUMMIT 41: Creating Inclusive Hospitals for the LGBTQ+ Community

- 11:15 am Introductions and Panel Discussion**
Kristen Eckstrand, MD, PhD, Child and Adolescent Psychiatrist, Western Psychiatric Hospital of UPMC; Co-Founder and Past Co-Director, Program for LGBTQ Health at Vanderbilt; Founding Chair, Advisory Committee on Sexual Orientation, Gender Identity, and Sex Development, Association of American Medical Colleges, Pittsburgh, PA
J. Joy Gero, PsyD, Program Director, General Adult and Behavioral Health Intensive Care Units, Program Manager, LGBTQ+ Health Initiatives, UPMC, Pittsburgh, PA

MINI SUMMIT 42: Health Equity Case Studies: Maryland Primary Care Program & Orange County, CA Equity Map

- 11:15 am Maryland Primary Care Program Focuses on Vaccine Equity**
Howard Haft, MD, MMM, CPE, FACPE, Deputy Secretary for Public Health Services; Interim Executive Director, Maryland Primary Care Program, Maryland Department of Health; Former Founder and the Chief Medical Officer, Conmed Healthcare Management, La Plata, MD

- 11:45 pm Orange County Equity Map: A Real Life Use Case of Applying Data Science Innovation to Conquer the COVID-19 Pandemic**
Clayton Chau, MD, PhD, County Health Office, Orange County; Director, Orange County Health Care Agency, Santa Ana, CA
Katie Kalvoda, President and Board Chair, AdvanceOC; Founder, G3 Ventures; Executive Chairman, Maverick Advisors, Newport Beach, CA
Hieu Nguyen, LCSW, MBA, Director of Population Health and Equity, Orange County Health Care Agency; Former Manager of Strategic Initiatives, LA Care Health Plan, Costa Mesa, CA

MINI SUMMIT 43: Building Critical Health Equity Strategies into your Population Health Improvement Initiatives & Global Diversity, Equity & Inclusion Benchmarks

- 11:15 am Building Critical Health Equity Strategies into your Population Health Improvement Initiatives**
Thomas L Johnson, JD, Executive Director, Population Health Alliance, Washington, DC
Rose Maljanian, MBA, Chairman and Chief Executive Officer, HealthCAWS; Chairman Emeritus, Population Health Alliance, Farmington, CT
- 11:45 am Global Diversity, Equity & Inclusion Benchmarks**
Julie O'Mara, President and Board Chair, The Centre for Global Inclusion; Author, Diversity Activities and Training Designs; Co-author, Managing Workforce 2000: Gaining the Diversity Advantage, Las Vegas, NV
Riikka Salonen, MA, System Director for Diversity, Equity and Inclusion, PeaceHealth; Former Program Manager, Diversity Talent Acquisition, Human Resources, Oregon Health and Science University, Vancouver, WA

MINI SUMMIT 44: Legal Information and Rights Education as an Element of Care & Social Inequities as Enterprise Risks for Health Care Organizations

- 11:15 am Legal Information and Rights Education as an Element of Care: A Promising Health Justice Strategy**
Samantha J. Morton, JD, Chief Executive Officer, MLPB, Boston, MA
- 11:45 am Social Inequities as Enterprise Risks for Health Care Organizations**
Keith Smith, JD, Member, Health Care Group, Moore & Van Allen; Former Executive Vice President and General Counsel, Atrium Health, Charlotte, NC
- 12:15 pm Luncheon Break**

DAY III PLENARY SESSION

1:00 pm Foundation Welcome



Debbie I. Chang, MPH, *President and Chief Executive Officer, Blue Shield of California Foundation; Former Director, Children's Health Insurance Program (CHIP); Former Deputy Secretary of Health Care Financing, Maryland Department of Health and Mental Hygiene, San Francisco, CA*

1:15 pm Health Equity for People with Disabilities: Unique Challenges and Opportunities



Merrill Friedman, *Senior Director, Disability Policy Engagement, Anthem, Inc., Washington, DC*



Lisa Iezzoni, MD, MSc, *Professor of Medicine, Harvard Medical School; Associate Director, Institute for Health Policy, Massachusetts General Hospital, Boston, MA*



Hoangmai H. Pham, MD, MPH, *President, Institute for Exceptional Care; Former Vice President, Provider Alignment Solutions, Anthem; Former Chief Innovation Officer, Center for Medicare and Medicaid Innovation, Centers for Medicare and Medicaid Services, Washington, DC (Moderator)*

2:00 pm Keynote: How to be an Antiracist



Ibram X. Kendi, PhD, *National Book Award Winner; Andrew W. Mellon Professor in the Humanities and Founding Director, Center for Antiracist Research, Boston University; Author, How to be an Antiracist and Stamped from the Beginning: The Definitive History of Racist Ideas in America, Boston, MA*

Interviewed by:



Mark Smith, MD, MBA, *Founding President and Former Chief Executive Officer, California Health Care Foundation; Clinical Professor of Medicine, University of California, San Francisco; Attending Physician, Positive Health Program for AIDS Care, San Francisco General Hospital, Oakland, CA*

2:30 pm Health Equity for the LGBTQI+ Community: Unique Challenges and Opportunities



Alphonso B. David, JD, *President, Human Rights Campaign; Former Deputy Secretary and Counsel for Civil Rights, New York; Former Special Deputy Attorney General for Civil Rights, New York State Attorney General; Former Staff Attorney, Lambda Legal Defense and Educational Fund, New York, NY*



Interviewed by:

Susan Dentzer, *Senior Policy Fellow, Duke-Margolis Center for Health Policy; Former Editor in Chief, Health Affairs; Former Health Correspondent, PBS NewsHour, Washington, DC*

3:00 pm Transition Break

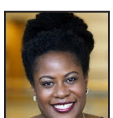
3:15 pm Advancing Maternal Health Equity: Policy, Community, Systems Solutions



Joia Adele Crear-Perry, MD, FACOG, *Founder and President, National Birth Equity Collaborative; Former Director of Clinical Services, New Orleans Health Department, New Orleans, LA*



Nicole L. Gonzales, BSN, RN, MSN, CNM, *Navajo Nation; Founder and Executive Director, Changing Woman Initiative; Nurse-Midwife, Bridge Care for Women, Albuquerque, NM*



Rachel Hardeman, PhD, MPH, *Associate Professor and Blue Cross Endowed Professor of Health and Racial Equity, Division of Health Policy and Management; Director, Center for Antiracism Research for Health Equity, University of Minnesota, Minneapolis, MN*



Laurie Zephyrin, MD, MPH, MBA, *Vice President for Advancing Health Equity, Commonwealth Fund; Former National Director, Reproductive Health Program, Former Acting Deputy Under Secretary for Health for Community Care, US Department of Veterans Affairs, New York, NY (Moderator)*

4:00 pm Eradicating Ageism



Ken Dychtwald, PhD, *Founder and Chief Executive Officer, Age Wave; Author, Age Wave: The Challenges and Opportunities of an Aging Society, San Francisco, CA*



Terry Fulmer, PhD, RN, FAAN, *President, The John A. Hartford Foundation; Former Distinguished Professor and Dean of Health Sciences, Northeastern University, New York, NY*



Nathaniel Kendall-Taylor, PhD, *Chief Executive Officer, FrameWorks Institute; Senior Fellow, Center on the Developing Child, Harvard University, Washington, DC*



Phyllis D. Meadows, PhD, MSN, RN, *Senior Fellow, Health, The Kresge Foundation; Former Director, Public Health and Health Officer, Detroit, Troy, MI*



Sarita A. Mohanty, MD, MPH, MBA, *President and Chief Executive Officer, The SCAN Foundation; Associate Professor, Kaiser Permanente Bernard J. Tyson School of Medicine; Former Vice President of Care Coordination for Medicaid and Vulnerable Populations, Kaiser Permanente, Long Beach, CA (Moderator)*

4:45 pm Day III Adjournment

DAY IV: THURSDAY, JUNE 10, 2021

CLOSING PLENARY SESSION

10:30 am Foundation Welcome



Terry Fulmer, PhD, RN, FAAN, *President, The John A. Hartford Foundation; Former Distinguished Professor and Dean of Health Sciences, Northeastern University, New York, NY*



Sarita A. Mohanty, MD, MPH, MBA, *President and Chief Executive Officer, The SCAN Foundation; Associate Professor, Kaiser Permanente Bernard J. Tyson School of Medicine; Former Vice President of Care Coordination for Medicaid and Vulnerable Populations, Kaiser Permanente, Long Beach, CA*

10:40 am Closing Keynote Address



Rochelle P. Walensky, MD, MPH, *Director, Centers for Disease Control and Prevention; Former Chief, Division of Infectious Diseases, Massachusetts General Hospital; Former Professor of Medicine, Harvard Medical School, Atlanta, GA*

11:15 am Senior Equity and Diversity Leaders Best Practices Roundtable



Joseph Betancourt, MD, MPH, *Senior Vice President, Equity and Community Health, Founder, Disparities Solutions Center (DSC), Massachusetts General Hospital; Associate Professor of Medicine, Harvard Medical School, Boston, MA*



Nicole M. B. Mitchell, MBA, CDP, *Chief Diversity and Inclusion Officer, Cedars-Sinai Health System; Former National Manager, Diversity and Corporate Social Responsibility, Kia Motors America, Los Angeles, CA*



Nwando Olayiwola, MD, MPH, *Chief Health Equity Officer, Humana; Former Chair and Professor, Department of Family and Community Medicine, College of Medicine, The Ohio State University; Former Director of the Center for Excellence in Primary Care, University of California, San Francisco, Columbus, OH*



Kou B. Thao, MA, Director, Center for Health Equity and the Office of Minority and Multicultural Health, Minnesota Department of Health, St. Paul, MN



Joy A. Lewis, MSW, MPH, Senior Vice President, Health Equity Strategies and Executive Director, Institute for Diversity and Health Equity, American Hospital Association; Former Senior Health Policy Leader, Kaiser Permanente, Washington, DC (Co-moderator)



Aletha Maybank, MD, MPH, Chief Health Equity Officer, American Medical Association; Former Deputy Commissioner and Founding Director, Center for Health Equity, NYC Department of Health and Mental Hygiene, Brooklyn, NY (Co-moderator)

12:15 pm Luncheon Break

1:00 pm Advancing Health Equity through Patient-Centered Research



Nakela L. Cook, MD, MPH, Executive Director, Patient-Centered Outcomes Research Institute (PCORI); Former Senior Scientific Officer and Chief of Staff, National Heart, Lung, and Blood Institute, Washington, DC



Interviewed by:

Joseph Betancourt, MD, MPH, Vice President and Chief Equity Inclusion Officer, Founder, Disparities Solutions Center (DSC), Mass General Hospital; Associate Professor of Medicine, Harvard Medical School Boston, MA

1:30 pm The Role of Healthcare Technology in Advancing Health Equity



Esther Dyson, Investor, Journalist, Author and Philanthropist; Executive Founder, Way to Wellville; Author, Release 2.0: A Design for Living in the Digital Age, New York, NY



Marvin O'Quinn, MHA, President and Chief Operating Officer, CommonSpirit Health; Former President, Jackson Health System, San Francisco, CA



Lauren R. Powell, MPA, PhD, Vice President, US Health Equity & Community Wellness, Takeda; President and Chief Executive Officer, The Equitist; Vice President, Head of Health Care Industry, TIME'S UP, Richmond, VA



Ivor Horn, MD, MPH, Director, Health Equity & Product Inclusion, Google; Investing Member, Rising America Fund, Portfolia; Board, Care Academy; Advisory Board, Way to Wellville, Change Healthcare and Onboard Health, San Francisco, CA (Moderator)

2:15 pm Healthcare Anchor Network Health Equity Initiatives and Case Studies



Darlene Hightower, JD, Vice President Community Health Equity, Rush University Medical Center; Administrative Law Judge, Chicago Commission on Human Relations, Chicago, IL



John Vu, MPH, Vice President, Strategy for Community Health, Kaiser Permanente; Design Team, Healthcare Anchor Network, Berkeley, CA



Kimberlydawn Wisdom, MS, MD, Senior Vice President, Community Health & Equity and Chief Wellness and Diversity Officer, Henry Ford; Assistant Professor, University of Michigan Health System; Former State Surgeon General, Michigan, Detroit, MI



David Zuckerman, MPP, Executive Director, Healthcare Anchor Network, Washington, DC (Moderator)

3:00 pm Governance & Health Equity: Leveraging Boards for Maximum Impact



Sponsored by the American College of Healthcare Executives (ACHE)

Mary A. Daffin, JD, Vice Chair, Board of Directors, Houston Methodist; Partner, Barrett Daffin Frappier Treder & Weiss, LLP, Houston, TX



John J. Lynch III, FACHE, President and Chief Executive Officer, Main Line Health; Former Chair, American College of Healthcare Executives; Former Executive Vice President and Chief Operating Officer, St. Luke's Episcopal Health System, Radnor, PA



Michele Richardson, JD, Chair, Board of Directors, Advocate Health Care; President, Higher Education Advocates, LLC, Chicago, IL



Delvecchio S. Finley, MPP, FACHE, President and Chief Executive Officer, Atrium Health Navicent; Former Chief Executive Officer, Alameda Health System; Former Chief Executive Officer, Harbor-UCLA Medical Center, Macon, GA (Moderator)

3:45 pm Closing Comments

4:00 pm Congress Adjournment